

The Building



Community House was formerly the hospital wing of the old workhouse in Allhallowgate, Ripon.

It is within easy walking distance from the Market Square, adjacent to the present day Workhouse Museum. Part of an historic site, the façade remains substantially unaltered and many of its original features are retained.

Community House is open to the general public weekdays between 9.00am and 4.30pm. There is also a **café** open to the general public throughout the day.

The interior of the building is fully modernised and Community House offers State of the Art **meeting, conference, training and counselling rooms** equipped to the highest standards. These facilities are available from 9.00am - 9.00pm

Modern, well equipped office accommodation with internet access points is available for lease to non profit making and voluntary organisations.

A one-stop information shop and administrative support are also available - this includes internet access, fax, photocopying, secretarial and reprographic services for clients; all at low cost.

Community House offers a safe environment and ample facilities for all the family. There is excellent access for people with disabilities.

SERVICES INCLUDE

- Reception and switchboard services, Fax / Photocopying
- Public community information point
- Café
- Modern offices with internet access - available for daily & long term hire
- Dedicated children's wing / play area
- Conference and meeting rooms

To book any of these facilities contact Ripon Council for Voluntary Service

Tel: 01765 603631

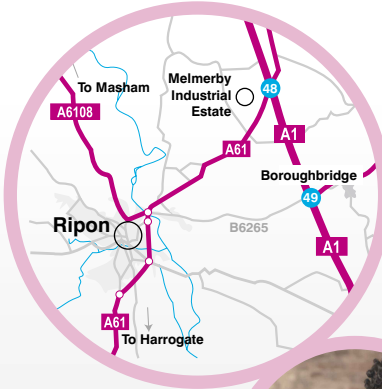
Web: www.riponcvcs.co.uk Email: info@riponcvcs.co.uk



Community House

bringing Ripon together

The Location



HOW TO GET TO RIPON

Ripon has direct access to the A1 (5 minutes). It is located on the A61, 20 minutes drive to the North of Harrogate.

HOW TO GET TO COMMUNITY HOUSE

Situated behind the Workhouse Museum off Allhallowgate

RECOMMENDED ROUTE BY CAR

Take the exit roundabout from the Ripon A61 by-pass named 'Rotary Way'. Turn left at the T-junction traffic lights into Stonebridgeway. Pass the Fire Station on the left and turn right at the next set of traffic lights into Allhallowgate. Car parking is available in the city centre.

ON FOOT

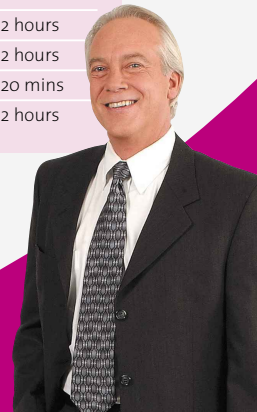
Leave the Market Square passing the Shopping Arcade on the right. Walk towards the Black Bull public house. Continue on straight passed the Post Office for a short distance until the Workhouse Museum is reached.

Ripon, to and from	Bus Number	Frequency
Masham	159	2 hours
Boroughbridge	142, 143	2 hours
Harrogate & Leeds	36	20 mins
Knaresborough	56	2 hours

If you can offer help as a volunteer or would like more information contact Ripon Council for Voluntry Service

Tel: 01765 603631

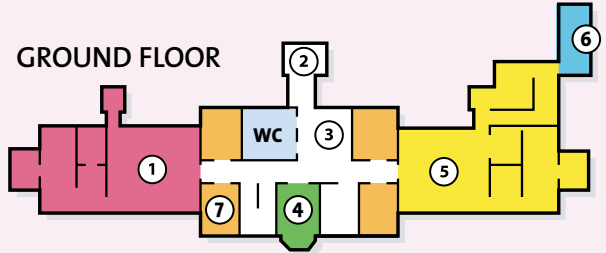
Web: www.riponcvcs.co.uk Email: info@riponcvcs.co.uk



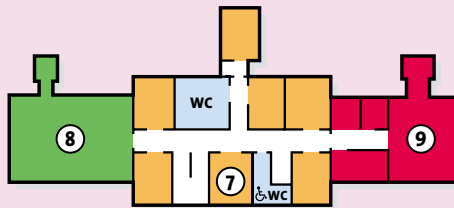
The Layout



GROUND FLOOR



FIRST FLOOR



The building has excellent facilities for disabled access with a lift to the first floor. The main entrance is immediately to the rear of the Work House Museum. A reception desk is available to welcome visitors. The layout of rooms and facilities are shown above.

Room	Size (sqft)	Capacity (people)	Furnishings
1. Café	467	38 - 60	10 tables, plus 45 chairs
2. Main Entrance	-	-	One-stop shop
3. Reception	-	-	Receptionist and switchboard
4. Meeting Room	178	12	Board room table, plus 12 chairs
5. Children's Wing	552	49 - 65	Play equipment, tables and chairs
6. Community Transport Office	-	-	Administration Centre
7. Office Letting	-	-	Various office sizes available
8. Conference Room	782	70 - 110	14 tables, plus 50 chairs
9. Training Suite	455	42 - 60	8 tables, plus 20 chairs

To book any of these facilities contact Ripon Council for Voluntary Service

Tel: 01765 603631

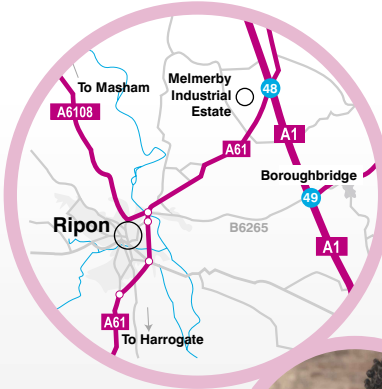
Web: www.riponcvcs.co.uk Email: info@riponcvcs.co.uk



Community House

bringing Ripon together

The Location



HOW TO GET TO RIPON

Ripon has direct access to the A1 (5 minutes). It is located on the A61, 20 minutes drive to the North of Harrogate.

HOW TO GET TO COMMUNITY HOUSE

Situated behind the Workhouse Museum off Allhallowgate

RECOMMENDED ROUTE BY CAR

Take the exit roundabout from the Ripon A61 by-pass named 'Rotary Way'. Turn left at the T-junction traffic lights into Stonebridgeway. Pass the Fire Station on the left and turn right at the next set of traffic lights into Allhallowgate. Car parking is available in the city centre.

ON FOOT

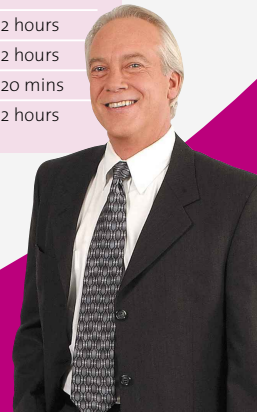
Leave the Market Square passing the Shopping Arcade on the right. Walk towards the Black Bull public house. Continue on straight passed the Post Office for a short distance until the Workhouse Museum is reached.

Ripon, to and from	Bus Number	Frequency
Masham	159	2 hours
Boroughbridge	142, 143	2 hours
Harrogate & Leeds	36	20 mins
Knaresborough	56	2 hours

If you can offer help as a volunteer or would like more information contact Ripon Council for Voluntry Service

Tel: 01765 603631

Web: www.riponcvcs.co.uk Email: info@riponcvcs.co.uk



The Ripon Community Café



Open to everyone, Monday - Friday from 10am - 4pm.

A VARIETY OF HEALTHY TASTY FOOD

- Freshly-made
- Home-made
- Local Produce
- Vegetarian Options
- Gluten Free
- Fairtrade and Organic
- Seasonal Menus

MENU OPTIONS INCLUDE

- Soup and Roll
- Baked Potatoes
- Lunch of the Day
- Welsh Rarebit
- Quiches
- Hot and Cold Sandwiches
- Hot and Cold Drinks and Snacks are always available

MENU TIMES

- Drinks & Snacks all day
- Start the Day 10.00-11.30
- Lunches 11.30-2.00 p.m
- Afternoon Tea 2.00-4.00

Why not make the Community Café your stop off point when visiting or shopping in Ripon? (map overleaf).

VISITS BY COACH AND SCHOOL PARTIES ARE WELCOMED IF BOOKED IN ADVANCE.

AL-FRESCO DINING AVAILABLE DURING THE SUMMER MONTHS

To book any of these facilities contact Ripon Council for Voluntary Service

Tel: 01765 603631

Web: www.riponcvcs.co.uk Email: info@riponcvcs.co.uk



Community House

bringing Ripon together

LOCATION

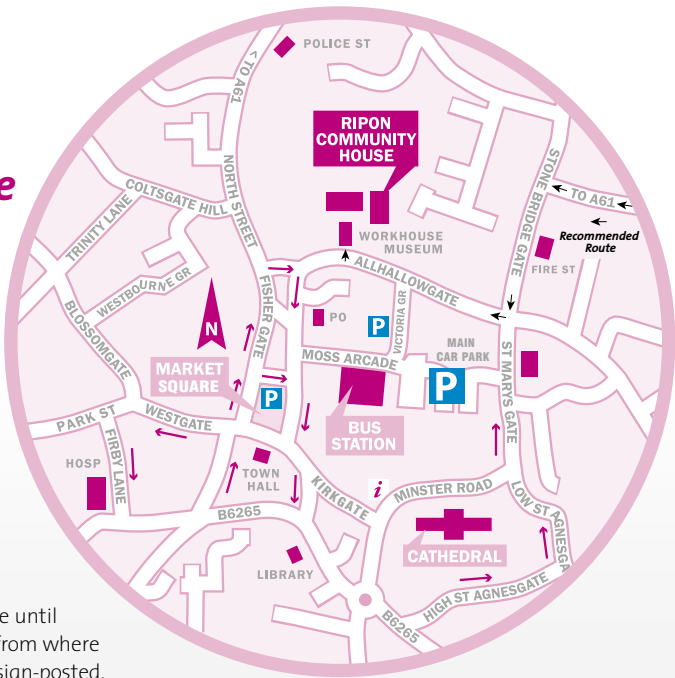
Where are we? We are situated off Allhallowgate immediately behind the Workhouse Museum. We are in easy walking distance of the Market Square and Shopping Arcade.

ON FOOT

Leave the market square with the Shopping Arcade on the right. Walk towards the Black Bull public house. Continue straight past the Post Office until the Workhouse Museum is reached from where the route to the Community Café is sign-posted.

CAR PARKING

Long and short stay available in adjacent public car parks.



Hospitality Menus for all Room Bookings



These are available on request to any organisation booking a room or holding a meeting within Community House. There is a choice of special menus at varying prices to satisfy the needs of individual clients.

To book any of these facilities contact Ripon Council for Voluntary Service

Tel: 01765 603631

Web: www.riponcvcs.co.uk Email: info@riponcvcs.co.uk

SPECIAL OFFER

VISITORS TO RIPON MUSEUMS CAN SAVE 10% ON FOOD AND DRINK AT THE RIPON COMMUNITY CAFÉ

A 10% discount on all food and drink will be given on production of an entrance ticket to any of the Ripon Law and Order Trail Museums.

Take a welcome break next to the Workhouse Museum after your visit.

